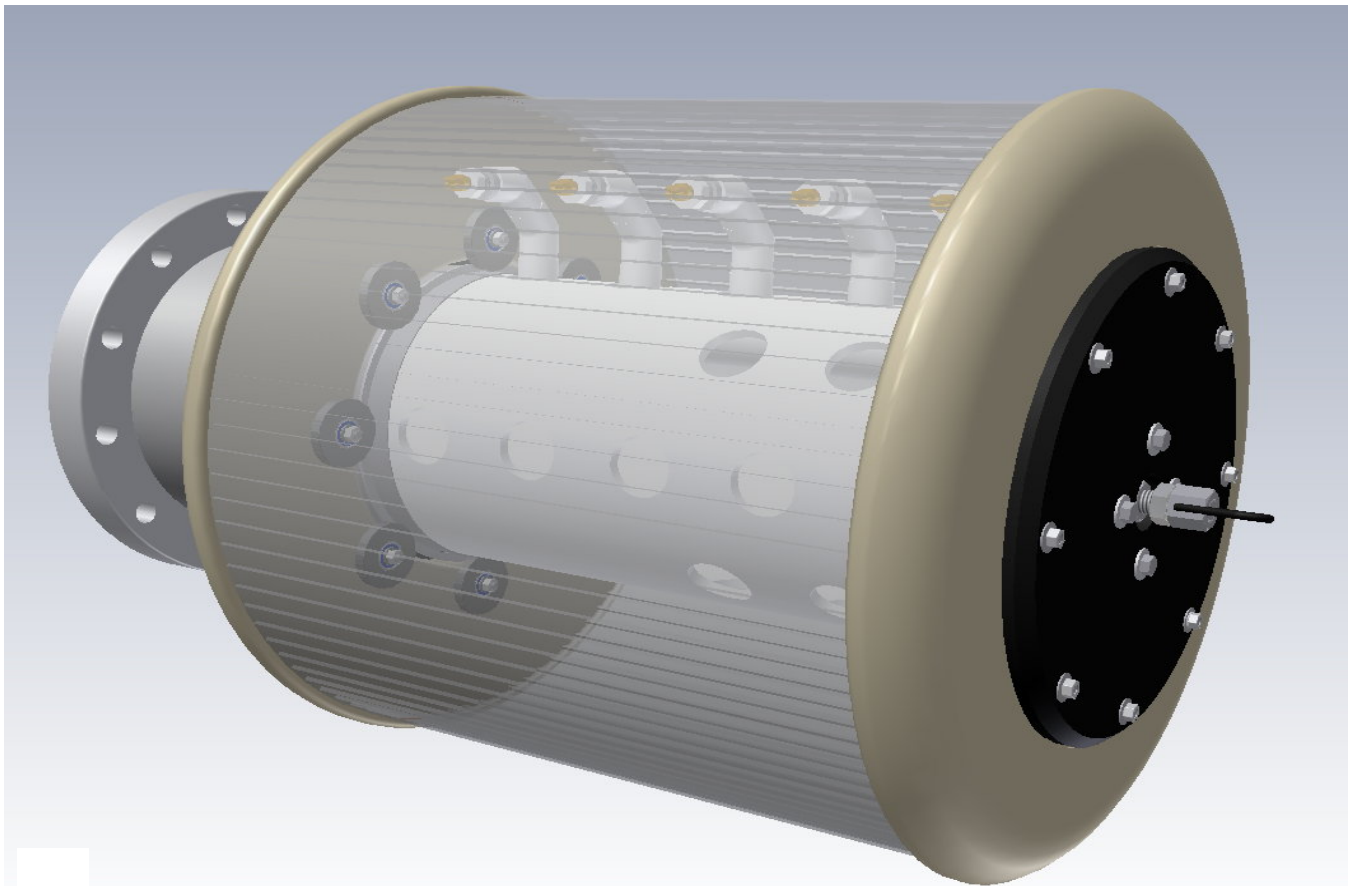




Intake Screens, Inc.

WATER DRIVE **Self-Cleaning Screen using** **WEDGEWIRE**

(Patents Applied For)

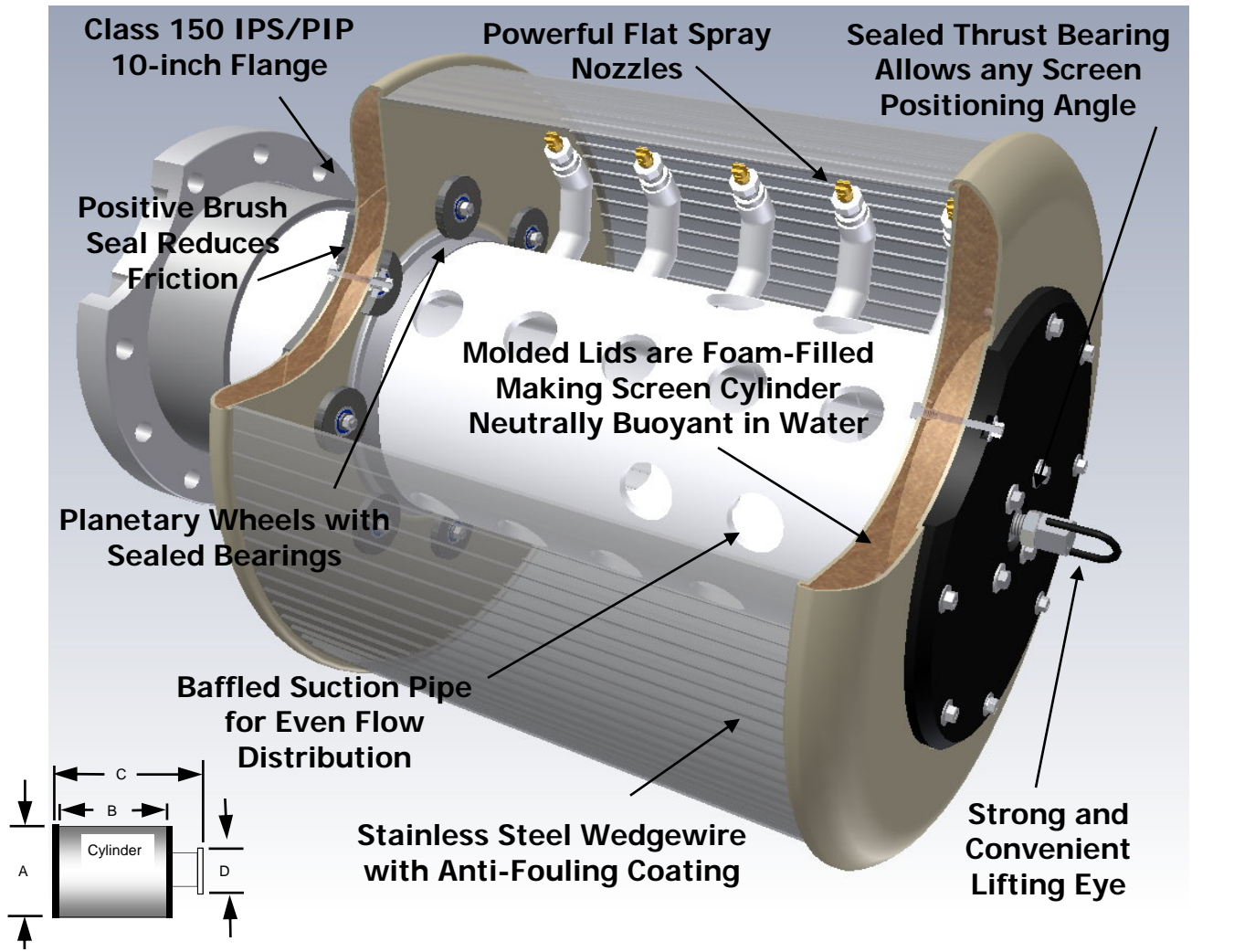


FEATURES:

- ◆ Wedgewire surface allows narrow openings with up to 60% open area;
- ◆ Wedgewire screen cylinder prevents collapse and is easy to clean;
- ◆ Anti-fouling coating reduces biofouling during non-operation periods;
- ◆ **Neutrally buoyant** screen reduces wear and improves rotation;
- ◆ Rotation sensor for remote monitoring of operation;
- ◆ Sealed thrust bearing allows connection to intake pipe at any angle;
- ◆ All stainless steel and plastic construction for long lasting protection;
- ◆ Design based on over 30 years experience in the business!

Filtration on the Suction Side of the Pump!

Applications for any type of Irrigation System



Model	Unit Dimensions A - B - C - D	Unit Weight	Submerged Weight of Cylinder (1)	Screen Surface Area	Flow Capacity with 0.068" Openings (2)	Flow Capacity with 0.047" Openings (3)	Est. Flow to Operate @ 45 psi (4)
ISI WD24-20	24" - 20" - 39" - 10"	85 lbs.	0 lbs.	10.5 ft ²	1410 gpm	1180 gpm	40 gpm
ISI WD24-24	24" - 24" - 39" - 10"	95 lbs.	3 lbs.	12.6 ft ²	1700 gpm	1410 gpm	48 gpm

- 1) The foam-filled lids reduce the rotating screen's weight when fully submerged reducing friction and wear;
- 2) Flow rate based on using 0.047" wide wedgewire with 60% open area and slot velocity of 0.5 fps;
- 3) Flow rate based on using 0.047" wide wedgewire with 50% open area and slot velocity of 0.5 fps;
- 4) Minimum recommended water pressure at the nozzle is 45 psi for operation;
- 5) Screen openings, flow rates, and cleaning system will typically meet strict agency fish screen criteria;
- 6) For larger pumping systems or difficult site conditions, consider ISI's brush-cleaned screens.



For more information contact:

Email: screens@intakescreensinc.com

Website: www.intakescreensinc.com

8417 River Road, Sacramento, CA 95832-5710

Phone: (916) 665-2727 Fax: (916) 665-2729